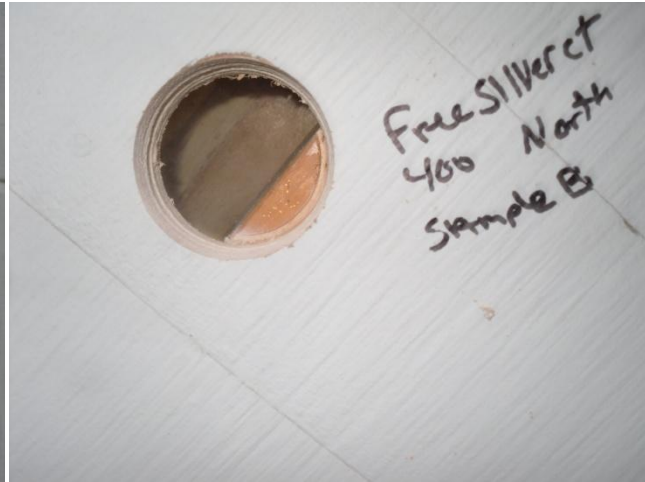


Free Silver Court, Building 400



400 North A



400 North B



400 North C



400 East A



400 East B



400 South A

Free Silver Court, Building 400 (page 2)



400 South B



400 South B



400 South C



400 South C

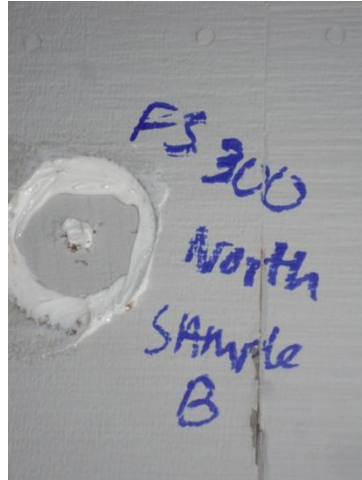


400 West A (siding)

Free Silver Court, Building 300



300 North A



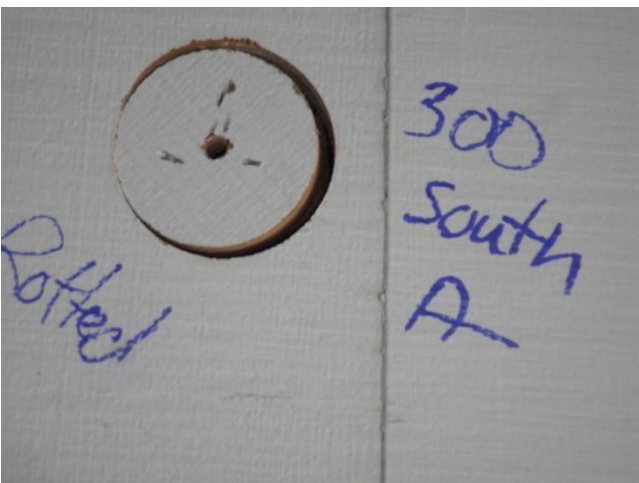
300 North B



300 East A



300 South A



300 South A



Free Silver Court, Building 300 (page 2)



300 South B (not D)



300 South B



300 South C

Note: Picture on right is of siding leaking water.  
On the West side of Building 300



Free Silver Court, Building 200



200 East A



200 South B

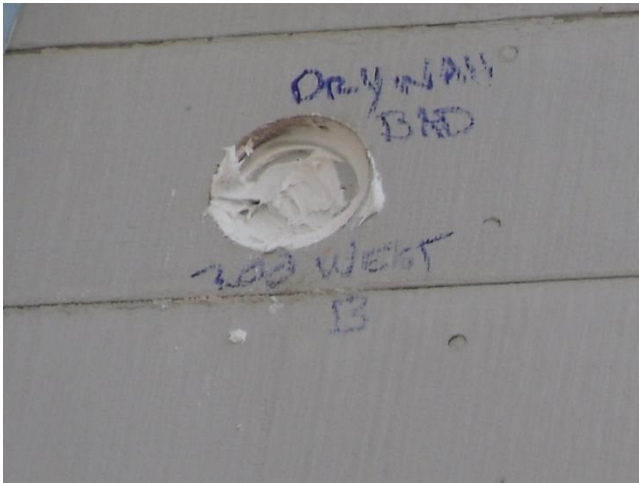


Note: picture to the left is of insulation. Pink is the insulation. Darker areas is mold growing inside the wall of sample 200 South B. (Picture could not be made clearer due to the angles.)



200 West A

Free Silver Court, Building 200 (page 2)



200 West B



Note: The above pictures were taken at 300 West B sample. As you can see from the pictures there is rot and mold growing on overhang

# Free Silver Court, Building 100



100 North C



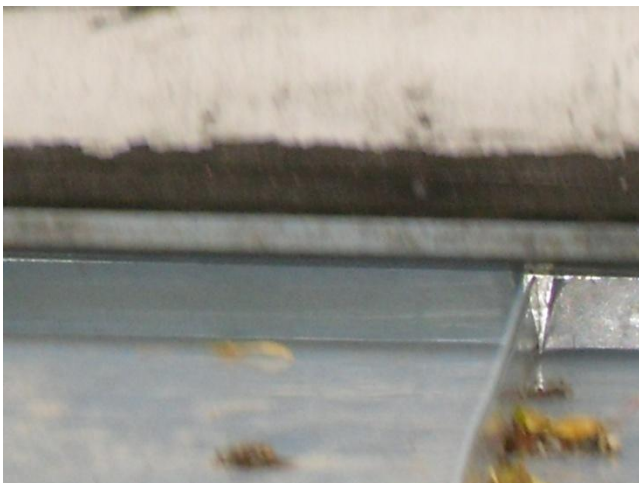
100 North D



100 South B



100 South (picture near South B)



100 South (picture near South B)



100 South E

Note: Picture taken near South E. Corner where building meet. Mold is growing out of siding.



Teal Court, Building 200



200 North B



Close up detail of plywood showing signs of moisture.



200 North D



Close up detail of separation of drywall and plywood.



200 South A



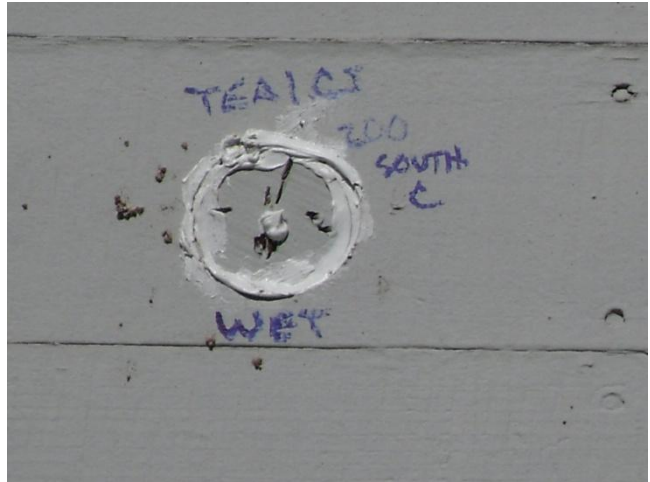
200 South A



Teal Court, Building 200 (page 2)

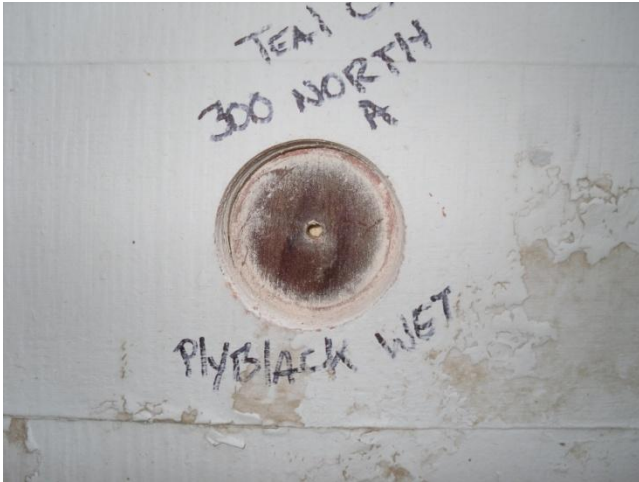


200 South B

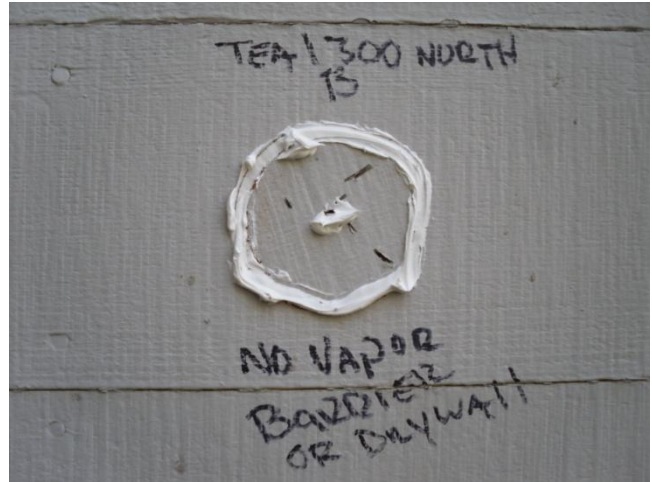


200 South C

Teal Court, Building 300



300 North A



300 North B



300 North C



300 South A



300 South B

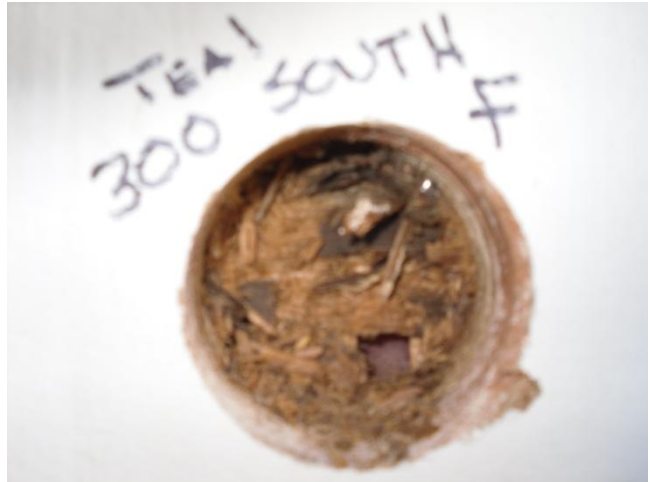


300 South B detail

Teal Court, Building 300 (page 2)



300 South E



300 South F



300 South F

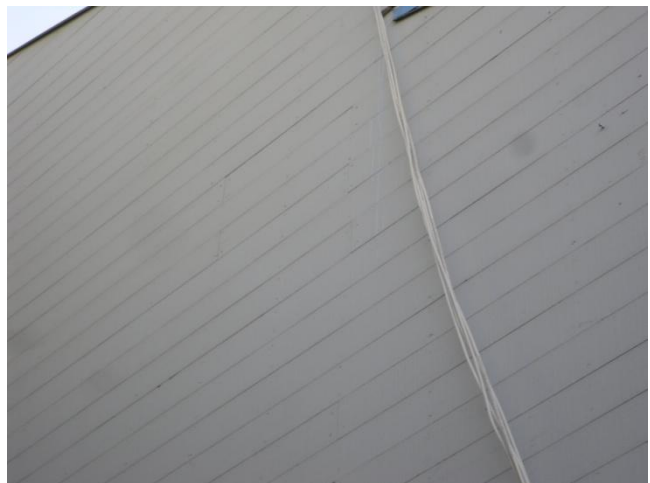


300 South G



300 South F

Note: Above picture shows deteriorated drywall.



300 West

Note: Above picture shows siding leaking water.



Teal Court, Building 400



400 South A



400 South Gutters showing exterior mold.



400 North A



400 North A detail rotten plywood.